

# Install Simantics

---



## Download Simantics from:

*No permanent link yet.*

*Ask guidance from Sami Majaniemi ([sami.majaniemi@vtt.fi](mailto:sami.majaniemi@vtt.fi)).*



## Install Simantics from downloaded file

- Installation program guides you through the installation process.

# Bring shared libraries into use

---



## Required libraries

- SimupediaStandardLibrary
- SimupediaSimulation
- SimupediaRSimulation



## Download shared libraries from:

<https://some.address.com/download>



## Launch Simantic Desktop

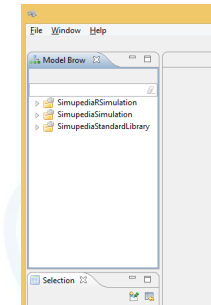
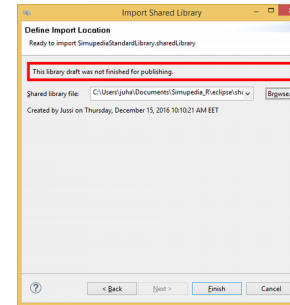
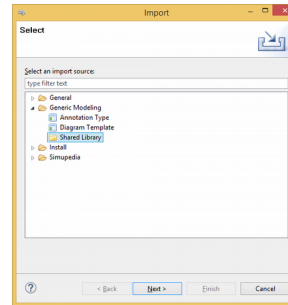
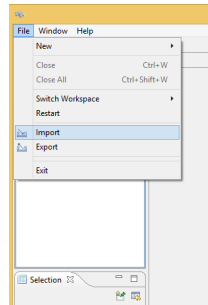
# Bring shared libraries into use



## Import shared libraries in following order:

1. SimupediaStandardLibrary
2. SimupediaSimulation
3. SimupediaRSimulation

File → Import → Generic Modeling → Shared Library → Next → Browse → Finish



# Install R (windows)

---



## Download R:

<https://cran.r-project.org/>

- Choose Download R for windows
- from next page: choose install R for the first time
- from next page: choose Download R 3.4.0. for Windows



## Install R from downloaded file R-3.4.0-win (.exe)

- Installation program guides you through the installation process.

# Install and run Rserve

---



## Start R



## Get and install Rserve packages

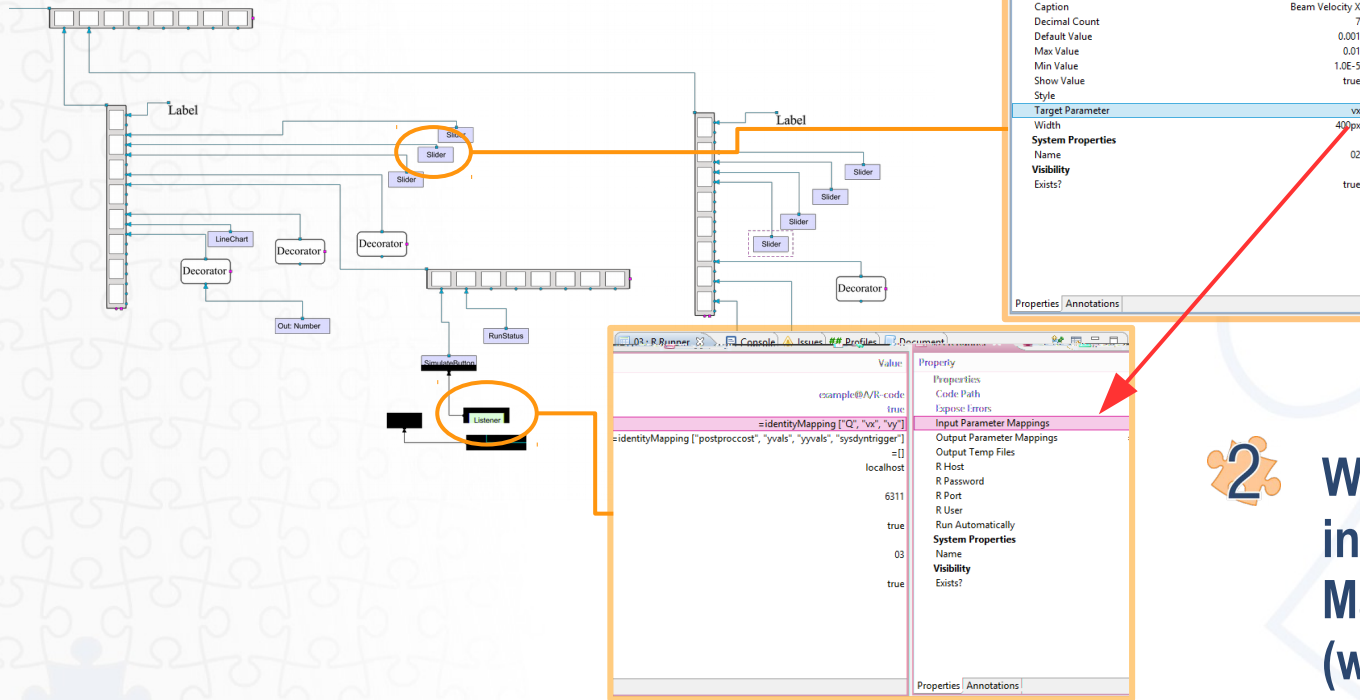
- In R type: `> install.packages("Rserve")`
- During Rserve installation you might need to choose folder for Rserve and CRAN mirror.



## Run Rserve

- In R type: `> library(Rserve)`  
`> Rserve()`

# Input parameters



1

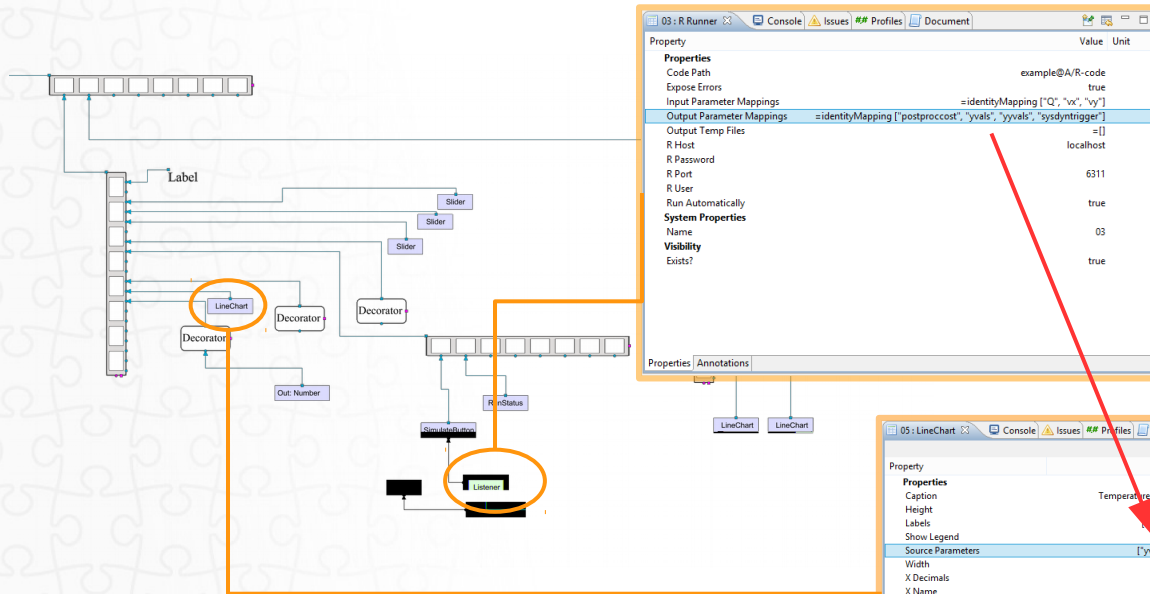
Write parameter name in objects "Target Parameter" (without quotations)

2

Write every input parameter in R Runner "Input Parameter Mappings" as list. (with quotations)

→ Window/Show View/Other.../Modeling/Properties

# Output parameters



Write every input parameter in R Runner "Output Parameter Mappings" as list. (with quotations)



Write parameter name in objects "Source Parameters" (without quotations)

→ Window/Show View/Other.../Modeling/Properties

# Parameterlist syntax

---



## Identity mapping

- Can be used when simupedia share same parameter names with model.

*=identityMapping["param1", "param2",..]*



## List of tuples

- Need to be used when simupedia document and model have different parameter names.

- Simupedia → Model (input parameters in runner) :

*= [("simuped1", "model1"), ("simuped2", "model2"), ..]*

- Model → Simupedia (output parameters in runner) :

*= [("model1", "simuped1"), ("model2", "simuped2"), ..]*



# Simupedia objects datatypes

---



## Input (read)

- Slider: *float*
- TextBoxDouble: *float*
- ComboBox: *List of string tuples [("param1", "text1"), ("param2", "text2"), ..]*
- RadioButton: *List of string tuples [("param1", "text1"), ("param2", "text2"), ..]*



## Output (write)

- Out Text: *string*
- Out Number: *float*
- LineChart: *List of strings: ["graph1", "graph2", ..]*
  - *Where single graph is 2d-list of floats: [[x1,y1],[x2,y2],[x3,y3],..]*