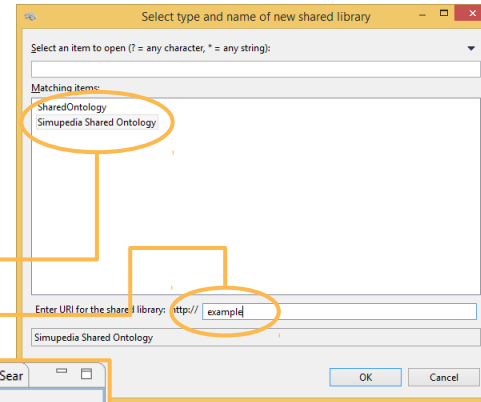


Example



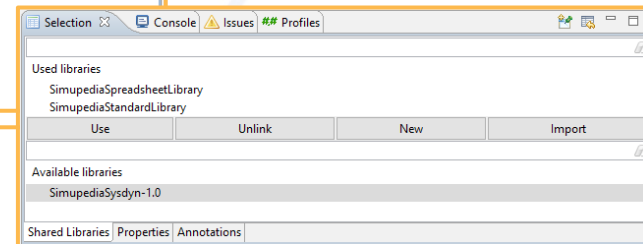
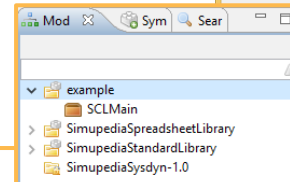
Create new shared library for this example:

- File → New → Shared Library
- select: "Simupedia Shared Ontology"
- Insert name for your library



Append needed libraries

- Select "example" library
- In properties window choose SimupediaSpreadsheetLibrary and SimupediaStandardLibrary libraries from "Available libraries" and click "Use" button.



→ Window/Show View/Other.../Modeling/Properties

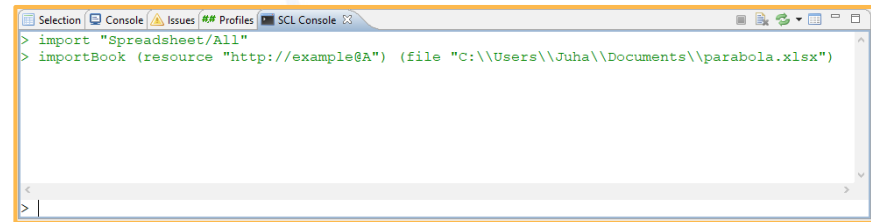
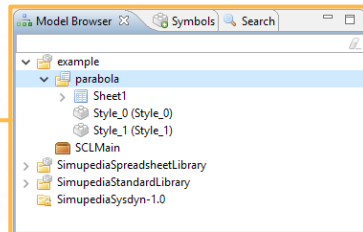
Example

3 Import Spreadsheet into project

- Open SCL-console
- Write in console:

```
import "Spreadsheet/All"  
importBook (resource "http://example@A") (file "C:\\Path\\to\\excelfile.xlsx")
```

- After importing, spreadsheet appears in "example" folder as spreadsheet.



→ Window>Show View/Other.../SCL/SCL Console

Example

4

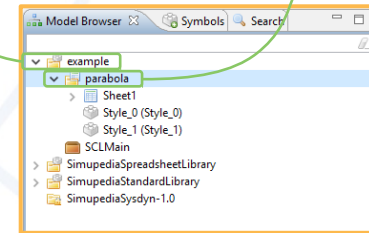
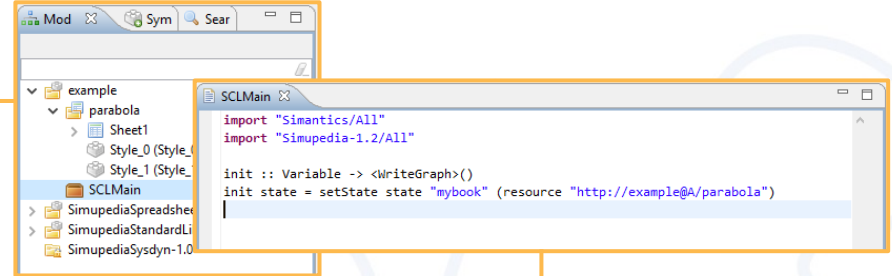
Include Simupedia SCL library

- Double click "SCLMain"
- Write in document:

```
import "Simantics/All"  
import "Simupedia-1.2/All"
```

```
init :: Variable -> <WriteGraph>()  
init state = setState state "mybook" (resource "http://example@A/parabola")
```

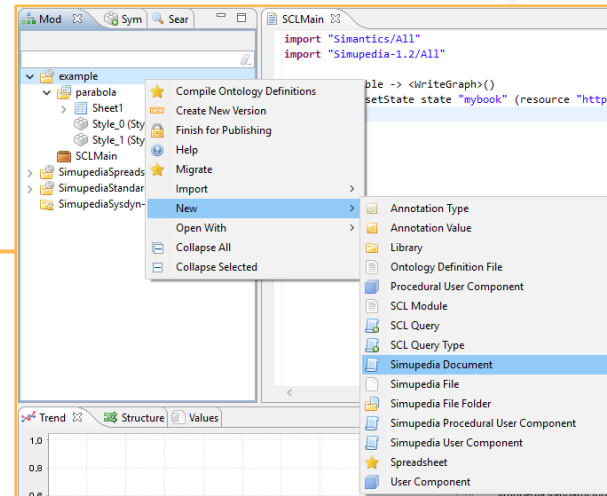
- Don't forget to save SCLmain (Ctrl+s)
- This links "parabola" spreadsheet to variable "mybook". Now we can refer to spreadsheet using "mybook" variable.



Example

5 Create new Simupedia document

- Right click "example"
- New → Simupedia Document

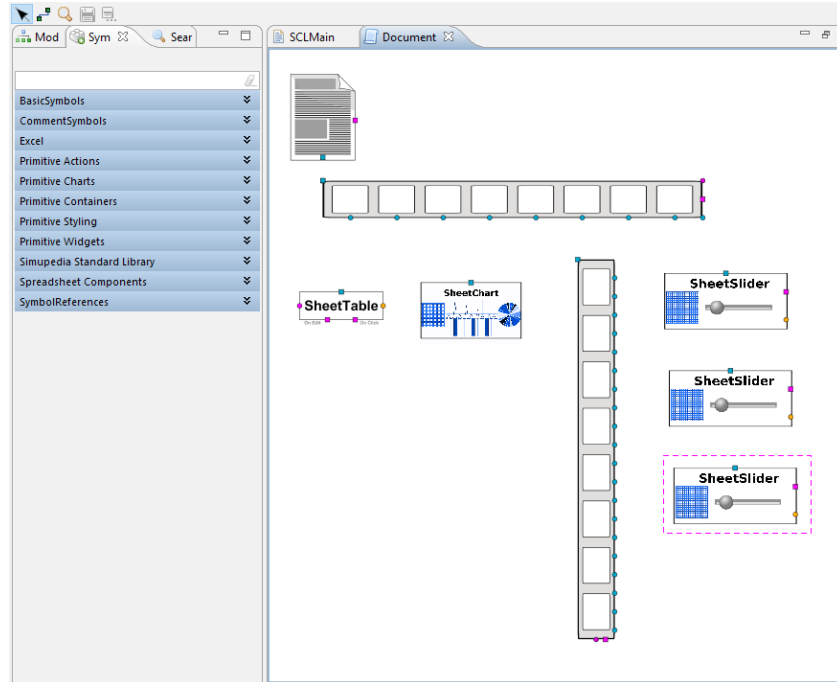


Example

6 Drag and drop Simupedia Objects

- Double click Document
- Scroll middle mouse button to zoom.
- Move canvas by dragging middle mouse button.
- Drag and drop objects from Symbols panel to document:

Primitive Container → Vertical panel
Primitive Container → Horizontal panel
Spreadsheet Components → SheetTable
Spreadsheet Components → SheetChart
Spreadsheet Components → SheetSlider



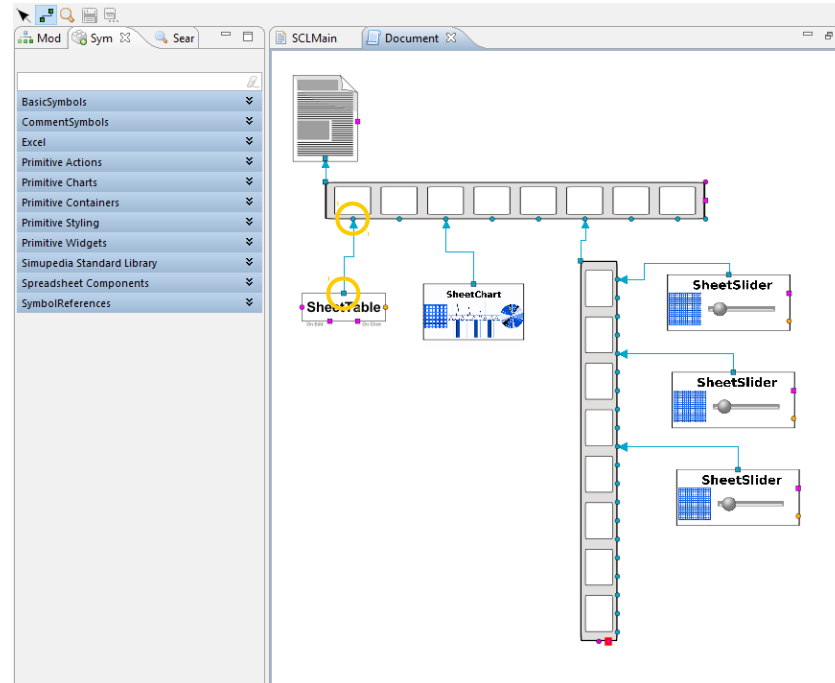
Example



Connect objects

select start point with Alt + left click
→ select end point with left click

Vertical panel	→ Root
SheetTable	→ Vertical panel
SheetChart	→ Vertical panel
Horizontal panel	→ Vertical panel
SheetSlider	→ Horizontal panel



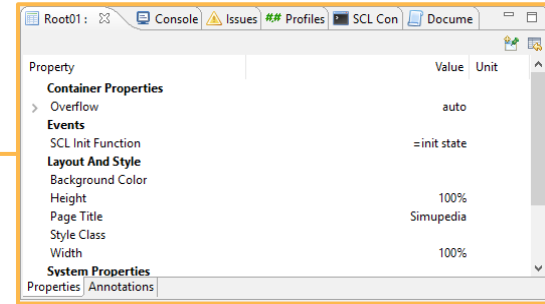
Example



SCL Init Function

- Select root (in Document window)
- Change parameters in Properties window (double click)

Root:
SCL Init Function =init state



- This take previously created "init state" function into use. Now "mybook" variable is available for Simupedia modules.

Example



Configure Simupedia parameters

- Select module (in Document window)
- Change parameters in Properties window

SheetTable:
Name of Book mybook
Name of Sheet Sheet1
Range A1:WWW

SheetChart:
Name of Book mybook
Name of Sheet Sheet1
Paired true
Range C3:D23
Chart Height 600px
Chart Width 600px

Axes Options (BL) >Y Axis 1 >Min & Max Values
Maximum 5.0
Minimum -5.0

A1:WWW marks whole sheet, but Simupedia uses only filled area.

Paired applies (x,y) coordinates from adjacent columns.

SheetSlider1:
Name of Targeted Book mybook
Name of Targeted Cell B3
Name of Targeted Sheet Sheet1
Caption constant A
Manual Maximum 5.0
Manual Minimum -5.0

SheetSlider2:
Name of Targeted Book mybook
Name of Targeted Cell B4
Name of Targeted Sheet Sheet1
Caption constant B
Manual Maximum 5.0
Manual Minimum -5.0

SheetSlider2:
Name of Targeted Book mybook
Name of Targeted Cell B5
Name of Targeted Sheet Sheet1
Caption constant C
Manual Maximum 5.0
Manual Minimum -5.0

Example

10 Test your spreadsheet simulation

- Open Document viewer
 - Window /Show View /Other.../Simupedia /Document Viewer
- Select right simupedia document from dropdown menu
- Slide sliders to test

